

Description

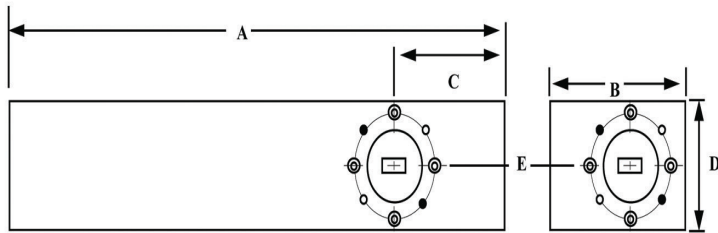
Mi-Wave's 561 Series Broadband Directional Couplers are broadband multi-hole energy-coupling devices. The 561 Series devices are available in various waveguide sizes ranging in frequency from 18.0 to 500 GHz.

Nominal couplings of 3, 6, 10, 20, 30, 40 and 50 dB are offered to complement specific test set requirements.

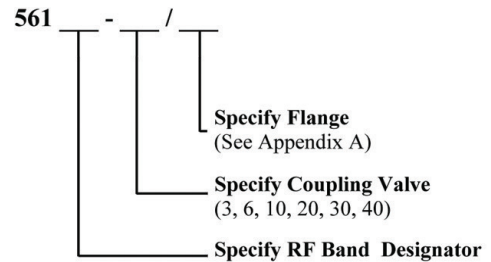
- *Broadband*
- *Low VSWR*
- *High Directivity*
- *Rugged Construction*
- *High Coupling Accuracy*
- *Calibrated Coupling Values*
- *Minimum Coupling Variation with Frequency*

Applications

The 561 Series Directional Couplers provide an efficient and convenient means for sampling a finite quantity of power flowing in a transmission line or for injecting a desired signal into the line.



Ordering Information



* Coupler available in WR-4 & WR-3 Bands

| Technical Specifications (typical) | | | | | | | | | |
|--|----------------------|-----------|-----------|-----------|-----------|------------|------------|-------------|-------------|
| Model No. | 561A | 561B | 561U | 561V | 561E | 561W | 561F | 561D | 561G |
| Frequency Band (GHz) | 26.5–40.0 | 33.0–50.0 | 40.0–60.0 | 50.0–75.0 | 60.0–90.0 | 75.0–110.0 | 90.0–140.0 | 110.0–170.0 | 140.0–220.0 |
| Coupling (dB) | 3, 6, 10, 20, 30, 40 | | | | | | | | |
| Coupling Variation (dB) | ± 1.0 | ± 1.0 | ± 1.0 | ± 1.0 | ± 1.0 | ± 1.0 | ± 1.5 | ± 1.5 | ± 1.5 |
| Coupling Accuracy (dB) (at center frequency) | ± 1.0 | ± 1.0 | ± 1.0 | ± 1.5 | ± 1.5 | ± 1.5 | ± 2.0 | ± 2.0 | ± 2.0 |
| Directivity (dB) Typical | 35 | 35 | 35 | 35 | 35 | 35 | 25 | 25 | 25 |
| Main Line VSWR | 1.05 | 1.05 | 1.05 | 1.10 | 1.10 | 1.10 | 1.15 | 1.15 | 1.15 |
| Auxiliary Line VSWR | 1.12 | 1.12 | 1.12 | 1.15 | 1.15 | 1.17 | 1.20 | 1.20 | 1.20 |

*Coupling fluctuates +/- 1dB or +/- 5% whichever is greater