

## Description

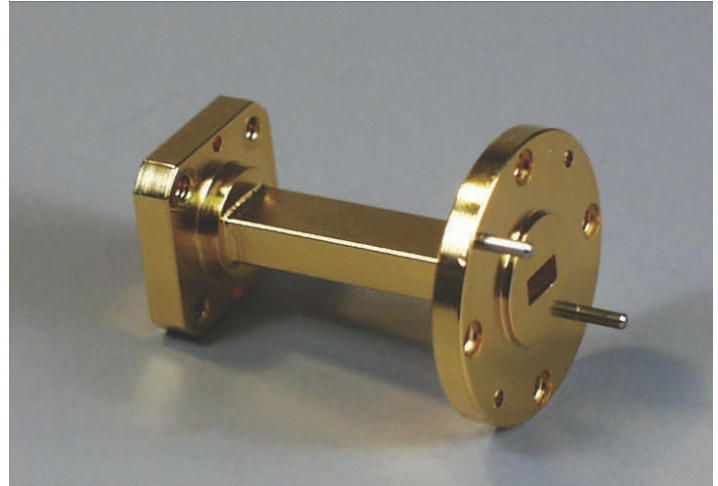
Mi-Wave's 688 Series Flange adapters are manufactured in standard waveguide sizes from 8 to 60 GHz. Each section is precision-machined and terminated in a variety of flange combinations. Please refer to Appendix A for a full list of available flanges.

- Precision Built
- Available from 8 to 60 GHz

Precise control of the waveguide dimensions and elimination of surface discontinuities make these sections useful in transmission line applications that require low waveguide loss and VSWR effects. In addition to the standard 688 Series Flanges, specialized flange adapters are available on request.

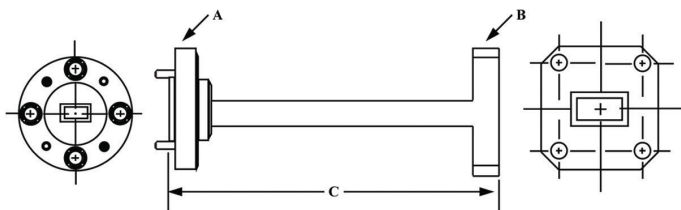
## Applications

The 688 Series Flange adapters are used in operational millimeter wave transmission systems that require a transition between components or systems with different flanges.



Custom flanges available

Dimensional Specifications					
Model No.	A	B	C		Weight (oz)
			in.	mm	
688Ku/419/541	UG-419/U	UG-541/U	1.00	25.40	3.0
688K/595/596	UG-595/U	UG-596/U	1.00	25.40	1.3
688K/595/425	UG-595/U	UG-425/U	1.00	25.40	1.4
688A/381/599	UG-381/U	UG-599/U	1.00	25.40	1.2
688A/381/600	UG-381/U	UG-600/U	1.00	25.40	1.1
688A/599/600	UG-599/U	UG-600/U	1.00	25.40	1.1
688B/383/719	UG-383/U	719	1.00	25.40	0.8
688B/383/385	UG-383/U	UG-385/U	1.00	25.40	0.8
688U/383/720	UG-383/U	720	1.00	25.40	0.8



## Ordering Information

