



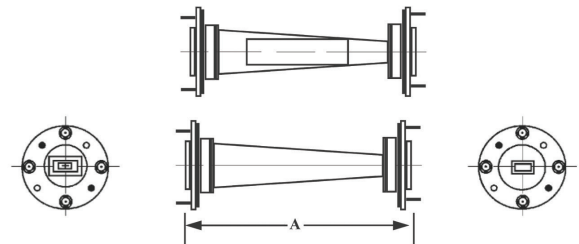
Description

Mi-Wave's 692 Series tapered transitions are precision tapers with standard flanges for two different waveguide sizes. In each transition, the fabrication process allows precise control of taper dimensions to provide a good impedance match. As a result, high mode purity is maintained in the transfer process with minimum VSWR effects and energy loss. These transitions are available in many waveguide size combinations from 12.4 to 320 GHz. In addition to the standard configurations listed in this section, many special transitions will be developed upon request.

- *Low Loss*
- *Minimum Reflections*
- *Precise Fabricated Tapers*
- *Shortest Possible Insertion Length Consistent with High Mode Purity*

Dimensional Specifications

Model No.	Input Waveguide Dimension (in.)	Output Waveguide Dimension (in.)	VSWR Max.	A	
				in.	mm
692K-A	0.422 x 0.170	0.2280 x 0.140	1.10	2.10	53.3
692A-B	0.280 x 0.140	0.224 x 0.112	1.10	2.00	50.8
692A-U	0.280 x 0.140	0.188 x 0.094	1.10	2.00	50.8
692A-V	0.280 x 0.140	0.148 x 0.074	1.10	2.00	50.8
692B-U	0.224 x 0.112	0.188 x 0.094	1.10	2.00	50.8
692B-V	0.224 x 0.112	0.148 x 0.074	1.10	2.00	50.8
692B-E	0.224 x 0.112	0.122 x 0.061	1.10	2.00	50.8
692B-W	0.224 x 0.112	0.100 x 0.050	1.10	2.00	50.8
692U-V	0.188 x 0.094	0.148 x 0.074	1.10	1.50	38.1
692U-E	0.188 x 0.094	0.122 x 0.061	1.10	1.50	38.1
692U-W	0.188 x 0.094	0.100 x 0.050	1.10	1.50	38.1
692V-E	0.148 x 0.074	0.122 x 0.061	1.10	1.50	38.1
692V-W	0.148 x 0.074	0.100 x 0.050	1.10	1.50	38.1
692V-F	0.148 x 0.074	0.080 x 0.040	1.10	1.50	38.1
692V-D	0.148 x 0.074	0.065 x 0.0325	1.15	1.50	38.1
692V-G	0.148 x 0.074	0.051 x 0.0255	1.15	1.50	38.1
692E-W	0.122 x 0.061	0.100 x 0.050	1.15	1.00	25.4
692E-F	0.122 x 0.061	0.080 x 0.040	1.15	1.00	25.4
692E-D	0.122 x 0.061	0.065 x 0.0325	1.15	1.00	25.4
692E-G	0.122 x 0.061	0.051 x 0.0255	1.15	1.00	25.4
692W-F	0.100 x 0.050	0.080 x 0.040	1.15	1.00	25.4
692W-D	0.100 x 0.050	0.065 x 0.0325	1.15	1.00	25.4
692W-G	0.100 x 0.050	0.051 x 0.0255	1.15	1.00	25.4
692F-D	0.080 x 0.040	0.065 x 0.0325	1.15	1.00	25.4
692F-G	0.080 x 0.040	0.051 x 0.0255	1.15	1.00	25.4
692D-G	0.065 x 0.0325	0.051 x 0.0255	1.15	1.00	25.4



MULTIPLE BAND TRANSITIONS ARE AVAILABLE

Example: 692A-W/599/387 WR-28 TO WR-10 Transition.

*Consult Mi-wave for dimensions and availability.

Ordering Information

