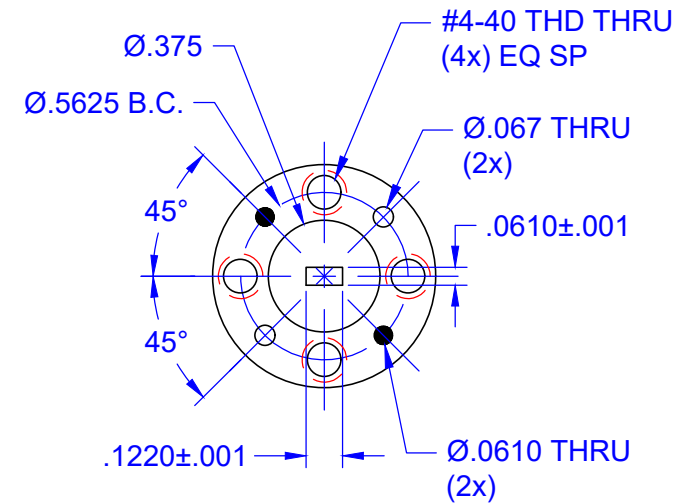
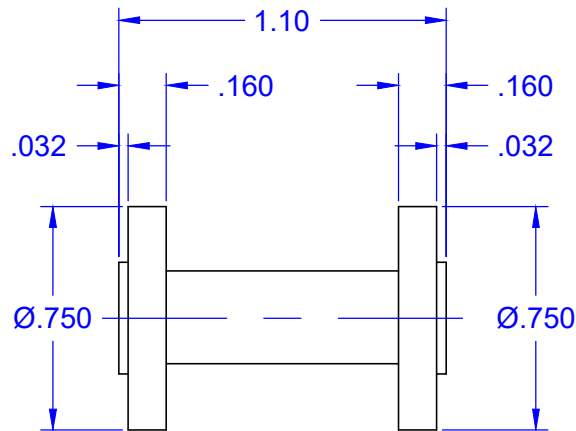
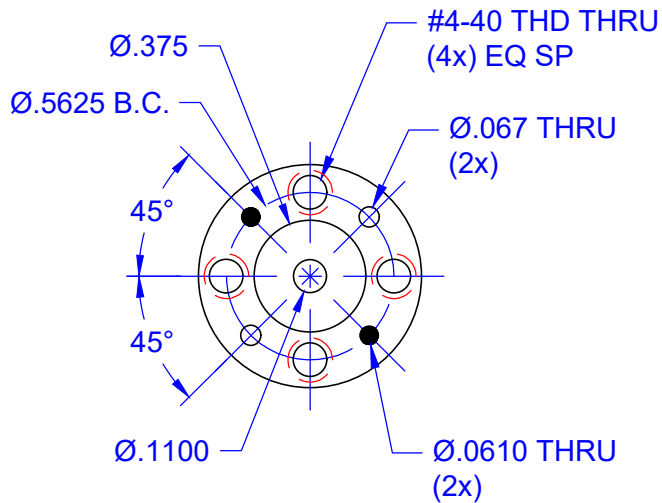


REVISIONS			
REV	DESCRIPTION	DATE	APPROVED
--	--	--	--



FREQUENCY RANGE (GHz)	CIRCULAR WAVEGUIDE PORT DIAMETER (IN.)
87-100	0.094
77-87	0.110
68-77	0.125
58-68	0.141

QTY	PART NUMBER	MATERIAL: 1/2 HARD BRASS		ITEM
--	--	DESCRIPTION		--
UNLESS OTHERWISE SPECIFIED ALL SURFACES $\sqrt{32}$		THIRD ANGLE PROJECTION		<b>Mi-Wave</b> Millimeter Products Inc.  TITLE <b>284E-387 OUTLINE</b>
DIMENSIONS ARE IN INCHES TOLERANCES ARE: DECIMALS: .1234 +/- .0005 .123 +/- .005 .12 +/- .01		DRAFTING: MRN		
ANGLES: +/- .5 DEGREES		APPROVED: M.S.		
ALL THREADS TO BE 2A OR 2B		DATE: 1/4/2011		
REF DWG#--		SHEET NO. 1	OF 1	SIZE <b>A</b>
		DWG NO <b>25876</b>		