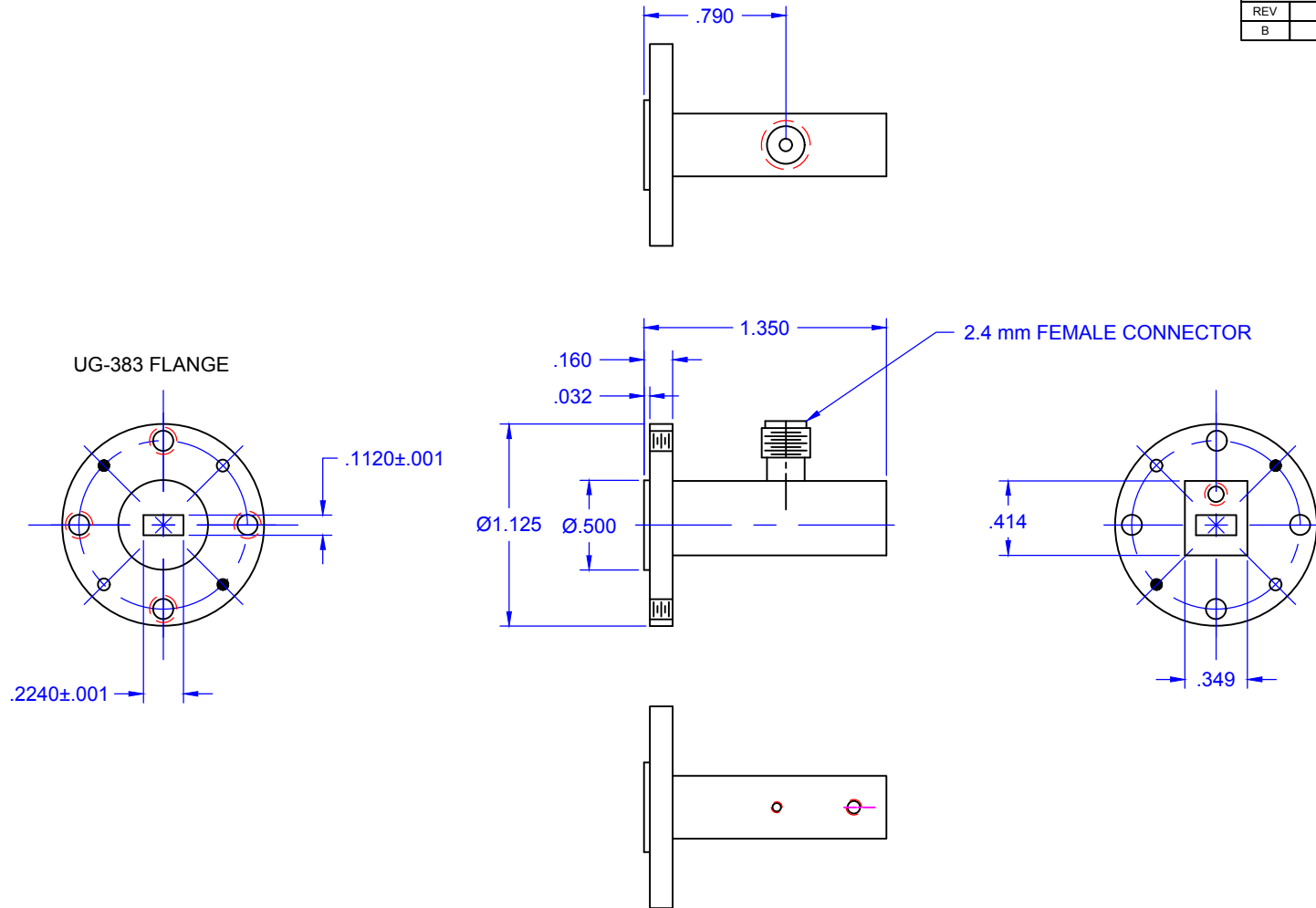


REVISIONS			
REV	DESCRIPTION	DATE	APPROVED
B	1.350 WAS 1.200	9-24-15	MS



TECHNICAL SPECIFICATIONS:

FREQUENCY 33 TO 50 GHZ WR-22
 INSERTION LOSS .4 dB NOMINAL
 VSWR 1.3:1 NOMINAL
 GOLD PLATED

QTY	PART NUMBER	MATERIAL: 1/2 HARD BRASS		DESCRIPTION	ITEM
UNLESS OTHERWISE SPECIFIED		 THIRD ANGLE PROJECTION		Mi-Wave Millimeter Products Inc. TITLE 410B-383-2.92/2.4mm OUTLINE	
ALL SURFACES $\sqrt{32}$					
DIMENSIONS ARE IN INCHES					
TOLERANCES ARE:					
DECIMALS: .1234 +/- .0005		DRAFTING: K.S.		SHEET NO. 1 OF 1 SIZE A DWG NO 22057 REV B	
.123 +/- .005		APPROVED: M.S.			
.12 +/- .01		DATE: 9/4/2013			
ANGLES: +/- .5 DEGREES		ALL THREADS TO BE 2A OR 2B			
REF DWG #: 13614					